



Greece Boat Booking

YOUR SAILING VACATION IN GREECE



Foutaine Pajot Tanna 47

" A sophisticated new sailboat, A majestic catamaran."

SPECIFICATIONS

YEAR
2022

LENGTH
13.94 m / 45.70 ft

BEAM
7.70 m / 25.30 ft

DRAFT
1.20 m / 4.00 ft

ACCOMMODATION

GUESTS CABINS WC
12 5+2 5+1

CABIN CONFIGURATION
5 Double-bed cabins inside
2 Bow cabins outside for crew

CHARTER RATES

LOW SEASON
From 6800€ / week

MID SEASON
From 11000€ / week

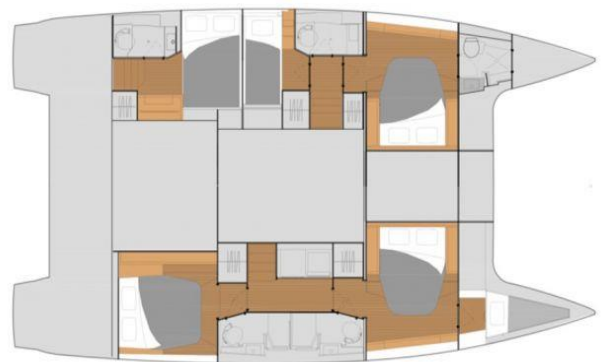
HIGH SEASON
From 13000€ / week



Greece Boat Booking

YOUR SAILING VACATION IN GREECE

www.greeceboatbooking.com
info@greeceboatbooking.com
+420734867610





Fountaine Pajot Tanna 47 (2022)

DESCRIPTION

Enjoy your sailing holidays on board our luxurious Tanna 47. The characteristics of the Tanna 47 make it an ideal catamaran for the most unforgettable sailing experience in the crystal-clear waters of Greece, with all the comforts.

The new lagoon will have five double cabins, five heads, and two more single cabins for the crew. The registration number is twelve. Also, will have a Power Generator, Air condition, Watermaker, Hydraulic Gangway, Electric Anchor Windlass, two fridges, a fully equipped galley, professional equipment, and more extras and accommodations.

Aboard, with her U-shaped galley across from the cockpit and large opening bay door, the Tanna 47 offers a heightened feeling of space, letting in light and focusing on elegance, highlighting the boat's interior design.

ADDITIONAL SPECIFICATIONS

MAIN SAIL

Battened, 77 sq.m.

ENGINE HORSEPOWER

2 * 60 HP

DIESEL TANK

940 l

CRUISING SPEED

7.5 Knots

WATER TANK

700 l

EQUIPMENT LIST

Power Generator, Air condition, Watermaker, Outboard Engine, Auto Pilot, Hydraulic Gangway, Dinghy, Self tailing winches, Electric Winch (main hallyard), Electric Anchor Windlass, Fridge (2), Bimini, Roller Genoa, Main Sail Full – Battened, Lazy Jack, VHF, Greek Waters Pilot, GPS Plotter, Epirb, Inverter, Shore Power 220 V, Battery Charger, Ice box, Galley Fully Equipped, USB Socket, Radio, Bluetooth, Hot Water, Electric Toilet Pump, Cabin Fans, Windex, Wind Instruments, Depth Sounder, Swimming ladder, Set of Snorkeling Gear, Anchor 45kg with 90m, 2nd anchor with 20 meters chain, Stern protection bumpers, Chart plotter, USB for MP3, Saloon shader, Cockpit shader, 2 extra emergency bilge pumps, Wooden cockpit table, Large gas bottle, Cushions bow, flybridge, cockpit, Emergency battery, Inox protection holder on the flying bridge, Instruments protection plexiglass, Protection film on the saloon, Generator panel with fault indicators, Inox brackets on the steps, Enhance self-tacking system with roll-on Genoa, Multi-instrument in chart table, Professional equipment, Battery Charger, Gel Batteries, Two extra batteries

For a full up-to-date list of leisure facilities or amenities onboard please contact me. Additional equipment and water toys can be provided on demand.