



Greece Boat Booking

YOUR SAILING VACATION IN GREECE



Fountaine Pajot / Saona 47

Easily recognizable design, her strong lines and overall design provide her an elegant look.

SPECIFICATIONS

YEAR

2021

LENGTH

14.00 m / 45.93 ft

BEAM

7.80 m / 25.60 ft

DRAFT

1.30 m / 4.27 ft

ACCOMMODATION

GUESTS CABINS CREW

12 5+1 2

CABIN CONFIGURATION

5 Double-bed cabins

(1 crew cabin)

1 bow cabin outside

DETAILS

All cabins are air-conditioned
and have en-suite facilities

CHARTER RATES

LOW SEASON

From €10,500/week

MID SEASON

From €12,500/week

HIGH SEASON

From €13,200/week

PEAK SEASON

From €14,900/week

NOTES

Prices include:

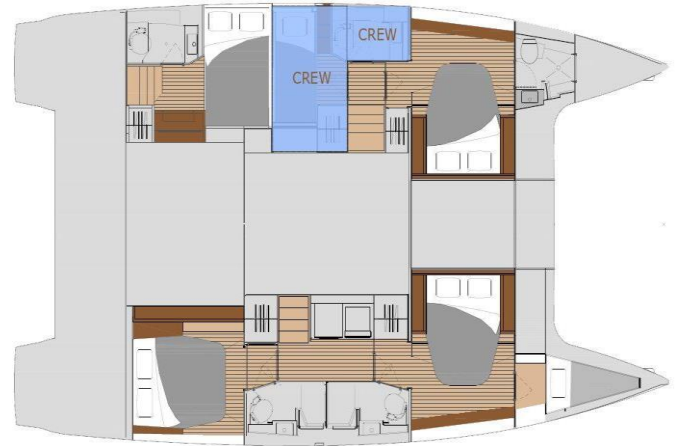
- 12% VAT



Greece Boat Booking

YOUR SAILING VACATION IN GREECE

www.greeceboatbooking.com
info@greeceboatbooking.com
+42 0734867610



This document is not contractual. All specifications are given in good faith and offered for informational purpose only. Greece Boat Booking does not warrant or assume any legal liability or responsibility for the accuracy, completeness, or usefulness of any information and/or images displayed. Yacht inventory, specifications and charter prices are subject to change.



Fountaine Pajot / Saona 47

DESCRIPTION

That's certainly the most common effect amongst visitors stepping on board the Saona 47. She was the first of Fountaine Pajot sailing catamarans to offer such **optimized relaxation areas**, and has inspired the very latest models. The surprising feature on this model is the **large platform at aft**, which is awesome for watersports activities, to sit or lay in just above water level, or even to lift the tender on or put it back in the water. You can even get the crew on board your dinghy before you splash it, making things much easier for many. No need to get the outboard off as the platform can bear the weight. With a large sofa and two sunbeds, **the flybridge is very spacious**. Perfect for chilling and enjoying the view, accompanying the skipper, enjoying some reading while soaking up sun, having your favorite drinks or local flavours of Greek cuisine accompanied with fine wine of local grape varieties (Agiorgitiko, Asyrtiko, Moschofilero, Roditis).

That's not all! Allowing three large sunbeds, **the front deck is also a very convivial area**. Pleasant all day long, the cockpit is really friendly and practical. Opening seamlessly onto the galley, it is also equipped for great moments around the dinner table which can receive up to 10.

ADDITIONAL SPECIFICATIONS

ENGINE

2 x Volvo 60 HP

DIESEL CAPACITY

2 x 470l

CRUISING SPEED

8 Knots

DISPLACEMENT

19t

SAIL AREA

124 m²

WATER CAPACITY

700l

EQUIPMENT LIST

INTERIOR LAYOUT

- Quintet version 5 double cabins and 5 lavatories

INTERIOR COMFORT

- Air-Condition, Generator, watermaker, Electric fresh water toilets, electric cabin fans, inverter, Wifi, TV, Bose audio system

EXTERIOR COMFORT

- Fly bridge and foredeck sun lounger , 9 m² lounge deck, hydraulic dinghy platform, electric winches, forward sunpad 5.5. m² , large cockpit table, integrated BBQ

EXTRAS

- SUP * 2, Folding mountain bikes, troll fishing rode, water toys, powerful Highfield dinghy, gennaker

For a full up-to-date list of leisure facilities or amenities onboard please contact me. Additional equipment and water toys can be provided on demand.