



Greece Boat Booking

YOUR SAILING VACATION IN GREECE



NIKKIM - SEALINE T60

Nikkim Sealine T60 is motor yacht available for crewed charters throughout Greece. With 3 cabins and 3 WC is perfect for groups up to 7 guests.

SPECIFICATIONS

YEAR BUILT / REFIT
2006 / 2019

LENGTH
18.00 m / 59.05 ft

BEAM
4.84 m / 15.88 ft

DRAFT
2.85 m / 9.35 ft

ACCOMMODATION

GUESTS	CABINS	CREW
7	3	2

CABIN CONFIGURATION

- 1 Master Cabin
- 1 Queen Cabin
- 1 Twin Cabin with Pullman

DETAILS

- All cabins have en-suite facilities

CHARTER RATES

HIGH - SEASON (July / August)
From €17,950 / week

MID - SEASON (June/
September)
From €16,950 / week

LOW - SEASON
From €15,950 / week

NOTES

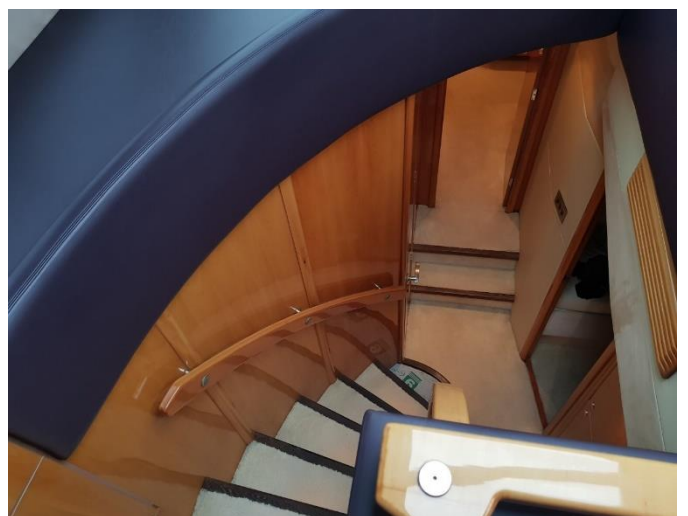
- Price DON'T include:
- 30% APA (Advance Provisioning Allowance)



Greece Boat Booking

YOUR SAILING VACATION IN GREECE

www.greeceboatbooking.com
info@greeceboatbooking.com
+30 6970629035
+42 0734867610



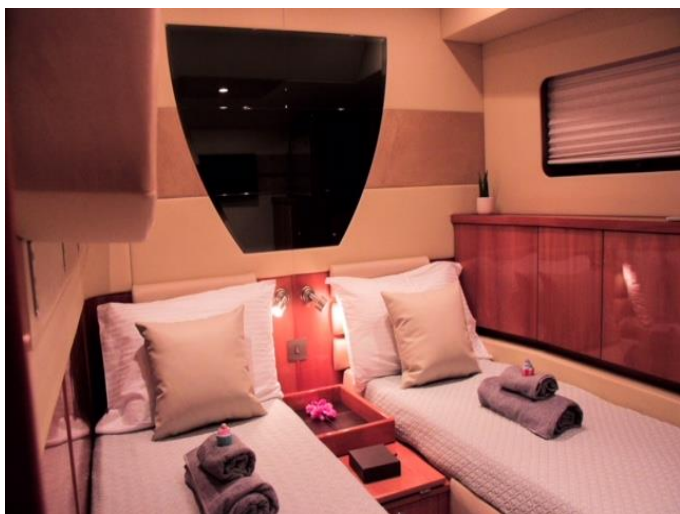
This document is not contractual. All specifications are given in good faith and offered for informational purpose only. Greece Boat Booking does not warrant or assume any legal liability or responsibility for the accuracy, completeness, or usefulness of any information and/or images displayed. Yacht inventory, specifications and charter prices are subject to change.



Greece Boat Booking

YOUR SAILING VACATION IN GREECE

www.greeceboatbooking.com
info@greeceboatbooking.com
+30 6970629035
+42 0734867610



This document is not contractual. All specifications are given in good faith and offered for informational purpose only. Greece Boat Booking does not warrant or assume any legal liability or responsibility for the accuracy, completeness, or usefulness of any information and/or images displayed. Yacht inventory, specifications and charter prices are subject to change.



NIKKIM - SEALINE T60

SERVICES

Start your holiday comfortably with our V.I.P transfer that includes pick-up at the airport or hotel in Athens, transfer by luxury Mini Van and our crew waiting for you at Marina to take you to your final destination.

Price include (12%VAT, crew services, port fees of the first & last night in Marina, welcome drink, standard breakfast and snack, hotel amenities, beach towels, snorkeling equipment and paddle board).

ADDITIONAL SPECIFICATIONS

ENGINE

2 x 800 HP

CRUISING SPEED

24 Knots

MAX SPEED

30 Knots

FUEL CONSUMPTION

240 l/h / 63.4 US gal/ h at cruising speed

DIESEL CAPACITY

3.140 l / 829.5 US gal

WATER CAPACITY

750l / 198 US gal

EQUIPMENT LIST

DECK & COCKPIT EQUIPMENT

- Electric gangway, swimming ladder, anchor windlass electric, hand bilge pump and handle, winch handles, fuel funnel, deck brush, mooring lines, fenders, boat hook, main anchor chain, dinghy repair kit, toolbox, boat documents

NAVIGATION EQUIPMENT

- Autopilot, GPS plotter, speed log, VHF, radar, echo sounder, barometer, divider, parallel ruler, Greek waters pilot, binoculars

SAFETY EQUIPMENT

- Life raft, torch light, fog horn, gas fog horn, First Aid Kit, EPIRB, life jackets, safety belts, radar reflector, fire extinguishers, box of flares, black ball.

GALLEY

- Electric stove and oven, BBQ, electric fridge, freezers, ice makers, cutlery, plates, glasses, spoons, knives, BBQ equipment, cookware sets, cutting surfaces

ADDITIONAL EQUIPMENT

- In all cabins are LCD TVs, DVD player, Mini Bar
- WIFI, Generator, Water—maker (desalinator), BBQ

TOYS:

- Snorkeling equipment and paddle board

For a full up-to-date list of leisure facilities or amenities onboard please contact me. Additional equipment and water toys can be provided on demand.